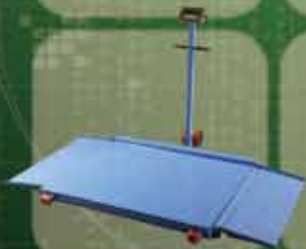


Others



Manual Furniture Mover



FM60

Model		FM60
Load Capacity	(kg)	600
Lifting Height	(mm)	300
Lifting Plate WxD	(mm)	225x120
Wheel, Polyurethane	(mm)	Ø150
Overall Size (LxWxH)	(mm)	570x390x780
Net Weight	(kg)	33

- Maximum load capacity 600kg
- Safely operated by one person
- Robust lifting mechanism
- Sold in one set only
- Including two transport unit with safety spindle winch with safety stop and built-in securing straps. Strap length 5meters.
- For bulky and heavyweight items. Ideal for removal, maintenance, installation applications.
- Operation: Position lifting plates underneath item to be moved, adjust upper support rail and tension securing straps.
- Lift item on both sides to equal height and move.
- Technical specification: powder coated finish. Lifting plates with non-slip covering. Upper and lower support rails with protective covering. Winch with crank handle and gear mechanism. 4 swivel castors with roller bearings. Non-marking poly wheel suitable for carpeted flooring.

Hydraulic Furniture Mover



FM180A



FM180B

Model		FM180A	FM180B
Load Capacity	(kg)	1800	1800
Lifting Height	(mm)	100	250
Lifting Plate WxD	(mm)	600x60	600x60
Wheel, Polyurethane	(mm)	Ø150	Ø150
Overall Size	(kw)	680x420x1000	680x420x1050
Net Weight	(kg)	80	86

- Maximum load capacity 1800kg
- For professional transport of heavyweight items.
- Ideal for delivery, removal, maintenance and assembly applications
- For switch cupboards, safes, containers and machinery.
- Sold in one set only: Including two transport unit with hydraulic lift and built-in securing straps. Strap length 5meters. Steering handles for direct wheel control. Load is easily transported and exactly positioned.
- Operation: Position lifting plates underneath item to be moved, Tension securing straps. Lift item on both sides to equal height and move.
- Technical specification: Support rails with protective covering. Powder coated finish. Heavy duty wheels with ball bearings. Non-marking polyurethane wheel suitable for carpeted flooring.



Hydraulic Furniture Mover- Heavy Duty

- Capacity 2.7ton, 3.6ton, 4.5ton
- For professional transport of heavyweight items.
- Ideal for delivery, removal, maintenance and assembly applications
- For switch cupboards, safes, containers and machinery.
- Sold in one set only: Including two transport unit with hydraulic lift and built-in securing straps.



Max. Capacity 4.5ton



FM450A

Model		FM270A	FM270B	FM360A	FM450A
Capacity	(kg)	2700	2700	3600	4500
Lifting Height	(mm)	150	305	150	150
Wheel	(mm)	Ø150	Ø150	Ø200	Ø200
Overall Size	(mm)	585x1050	585x1050	585x1100	610x1210
Net Weight	(kg)	148	164	182	218

Mechanic Jack

- Lift the object from the floor easily.
- Use handle bar to lift the object first and slide the jack under this object, then slide corner movers in accordingly.
- Sold in set only. Including 1pc lifting handle and 2pcs mechanic jacks.

Model		MJ1000A	MJ1000B
Lifting Capacity Per Pair	(kg)	1000	
Min./Max. Lifting Height	(mm)	12/50	
Wheel Diameter	(mm)	Ø138x28	
Material of Wheel		Steel	Polyurethane
Overall Size	(mm)	168x118x275	
Net Weight/Set	(kg)	10	9.6



MJ1000A



- Low level corner bogies essentially used to move awkward rectangular loads.
- Give mobility in locations where normal equipment for such handling cannot be used.
- Easy to position-lift one side of load by a transport jack and slide in corners, then repeat for other side.
- Load platform covered with ribbed rubber for load protection.
- AR100A and AR100B are made of casting aluminum.
- AR150 frame is made of press steel.
- 3pcs ball bearing castors in each corner mover.
- Sold in one set (4pcs) only.

Model		AR100A	AR100B	AR150
Max. Load Each	(kg)	100	100	150
Castor Diameter	(mm)	Ø50x20		
Load Height	(mm)	15		
Overall Size	(mm)	305x165x85	195x165x85	366x204x85
Frame Material		Aluminium	Aluminium	Steel
Net Weight per Set	(kg)	5.6	4.8	8

Corner Movers



AR100A



AR150



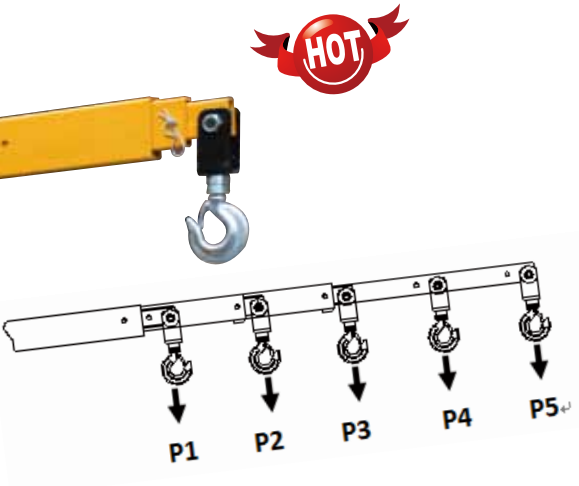
AR100B

Counter Balance Shop Crane

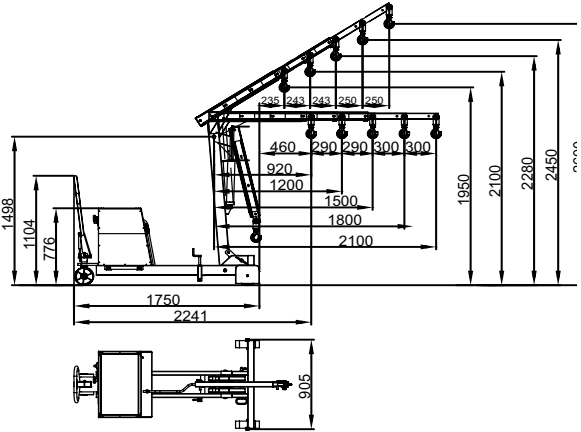
- Five-position to adjust the length of the jib.
- Counter balanced design is easy to operate.
- Heavy duty design.



SCB550 manual



fully folded



Model		SCB550	SCB750
Max capacity at position	(Kg)	150/250/350/450/550	190/330/470/610/750
5 adjustable positions	(mm)	2080/1790/1500/1210/925	2080/1790/1500/1210/925
Dimension after folded	(mm)	2100X1050X870	2100X1050X870
Balance Weights	(Kg)	300	410
Net Weight(with balance weights)	(Kg)	450	600

Electric Counter Balance Shop Crane

- Model SSCB600: Electric lifting and Manual Moving.
- Model FSCB600: Electric lifting and electric moving.
- Five positions to adjust the length of the jib.
- Heavy duty design.



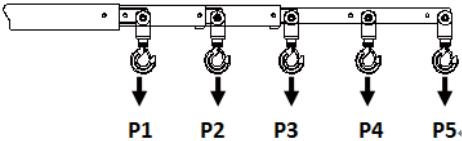
fully folded



SSCB600(Semi-Electric)



fully folded



electric drive axle

FSCB600(full electric)

Model			SSCB550	FSCB550
Capacity	P1	(kg)	550	550
	P2	(kg)	400	400
	P3	(kg)	300	300
	P4	(kg)	220	220
	P5	(kg)	150	150
Lowering Speed	(mm/s)		≤76	≤76
Power/voltage	(Kw/V)		0.8/12	0.8/24
Battery	(Ah)		50	50
Moving speed	(km/h)			2.0

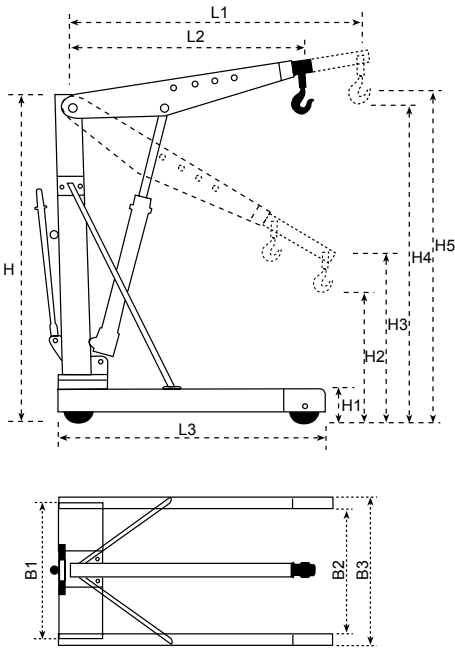
Euro Shop Crane

SA series

- Heavy duty design.
- Suitable for European pallet.
- Chrome plated lifting piston.
- Conforms to CE safety standard.



SA1000



Model		Capacity	Position 1	Position 2	Position 3	Position 4	Net Weight
SA500	(kg)	500	500	450	400	350	81
SA1000	(kg)	1000	1000	900	800	700	103

Dimensions		L1	L2	L3	H1	H2	H3	H4	H5	H	B1	B2	B3
SA500	(mm)	1360	1060	1395	155	470	705	2225	2475	1595	925	840	1000
SA1000	(mm)	1360	1060	1395	155	470	705	2225	2475	1595	925	840	1000

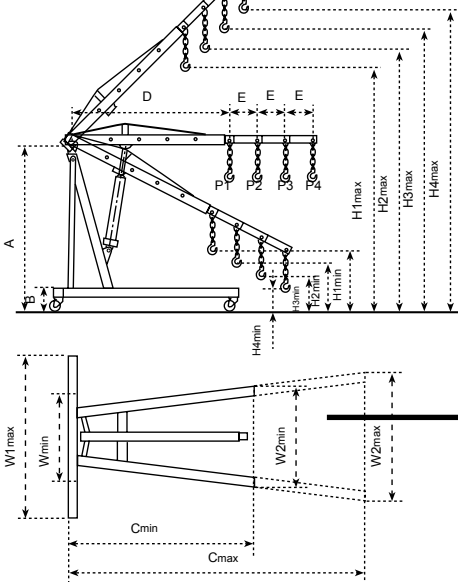
Foldable Shop Crane

SE series

- **Economic but meets CE standard**
- Four hook position.
- Smooth, quite operation.
- Hard chrome rams and pump piston.
- Full swivel hook with safety clip fitted as standard.
- Controlled lowering with positive stop.
- Overload valve.
- Top of stroke by-pass prevents hydraulics locking at full height if overpumped.
- Jacks from folded to upright position.

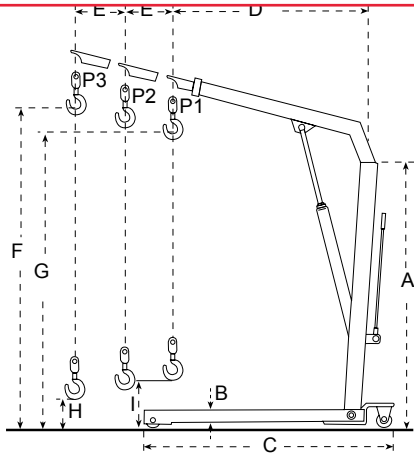


folded



SE2000

Model		SE1000	SE2000
Capacity	(kg)	1000	2000
Capacity at Position	P1	1000	2000
	P2	750	1500
	P3	500	1000
	P4	250	500
Net Weight	(kg)	70	92
Dimensions	A	1420	1450
	B	185	185
	Cmin	1395	1640
	Cmax	--	--
	D	930	985
	E	90	185
	W1min	690	745
	W1max	--	--
	W2min	980	1050
	W2max	--	--
	H1min	490	300
	H1max	1960	1690
	H2min	420	--
	H2max	2030	1790
	H3min	350	--
	H3max	2120	1890
	H4min	280	--
	H4max	2200	1990



- Unique technology of quick lifting by double action pump.
- Larger capacity than normal shop cranes at 3 position.
- Chrome plated lifting piston and pump piston.
- Relief valve to prevent overload.
- 360° swivel operating handle.
- Forged heavy duty swivel hook.
- 125% overload testing before delivery.
- **Conforms to CE safety standard.**



New deadmen lowering system !



SC2000B disassembled frame

Foldable Shop Crane

SC series



SC2000A folded



SC2000A



SC2000B folded



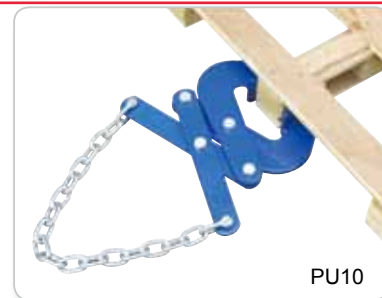
SC2000B

Model	Capacity at Position (kg)			Dimensions (mm)									Overall Width (mm)	Net Weight (kg)
	P1	P2	P3	A	B	C	D	E	F	G	H	I		
SC500A	500	425	350	1410	165	1510	895	102	2120	1960	150	340	970	75
SC1000A	1000	800	700	1675	90	1630	1230	150	2445	2330		245	1120	115
SC2000A	2000	1700	1500	1690	205	1900	1290	150	2705	2505		230	1165	165
SC500B	500	425	350	1410	165	1510	895	102	2120	1960	150	340	970	75
SC1000B	1000	800	700	1675	90	1630	1230	150	2445	2330		245	1120	115
SC2000B	2000	1700	1500	1690	205	1900	1290	150	2705	2505		230	1165	165

Pallet Pullers

A. Double Scissor Action Model: PU10

- One -piece curved heads have integral spurs for gripping pallet stringers.
- Scissor action 30" long. 30" long chain.

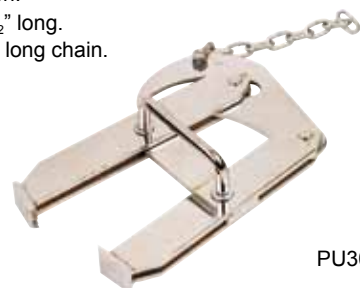


B. Single Scissor Action Model: PU20

- Single scissor action allow for wider jaw opening.
- Opens to 5-1/2". Overall closed length: 19-1/2".
- 30" long chain.



- Cammed closing action provides maximum gripping strength and reduced pinch points.
- Safety handle enables easier positioning and removal of separated heads.
- Grip both metal and wood pallets with biting action.
- 15-1/2" long.
- 7-1/2" long chain.



- The **NU-LIFT** pallet pullers are used to pull loaded pallets, slide heavy crates, etc., to edge of dock or truck, so it can be picked up with forklift truck. Variable jaw width grabs pallet securely and automatically releases.
- Rugged steel construction. 2-3/4" high heads are self-cleaning and unaffected by wood particles, paint or grease. 1/4" proof coil chain included for attaching pull chain.

Model	Max. pallet weight	For stringers	Length	Net weight
PU10	5000 lbs	UP to 3"	30"	21 lbs
PU20	5000 lbs	UP to 5-1/2"	19-1/2"	12 lbs
PU30	4500 lbs	UP to 3-1/2"	15-1/2"	14 lbs

Truck Ramps

KCQ series

- Easy to use.
- Non-slip running surface.
- Two fixed castor for easy handling.



Model	Capacity	Height	Width	Length	Net Weight	Wheel
	(t)	(mm)	(mm)	(mm)	(kg)	(mm)
KCQ201	20	242	343	1197	49	2xØ125
KCQ202	20	242	454	1197	63	2xØ125

Trailer Stabilizer Jacks

- A "must" for safely loading and unloading trailers !
- Meet OSHA Specification with our wide variety of Trailer Stabilizing Jacks OSHA 1910.178(k)(3) states "Fixed jacks may be necessary to support a semi-trailer and prevent upending during the loading or unloading when the trailer is not coupled to a tractor".

Model	TJ40	TJ40A
Service Range (in.)	39-1/2-51	39-1/2-51
Static Capacity (lbs/ tonne)	100000/ 45	100000/ 45
Lifting Capacity (lbs tonne)	40000/18	50000/22.7
Cap Size	7.5" diameter	7.5" diameter
Net Weight (lbs/kg)	110/50	125/57



TJ40

Model	TJ50	TJ50A	TJ50B	TJ50C	TJ50D
Service Range (in.)	39-1/2-51	39-51	39-51	45-57	45-57
Static Capacity (lbs/ tonne)	100000/ 45	100000/ 45	100000/ 45	80000/ 36	100000/ 45
Lifting Capacity (lbs/ tonne)	40000/18	40000/18	50000/22.7	40000/18	40000/18
Cap Size	8" diameter	7.5" diameter	8" diameter	8" diameter	8" diameter
Net Weight (lbs/kg)	125/57	110/50	125/57	115/52	130/59



TJ50

Model	TJ60	TJ60A
Service Range (in.)	39-1/2-51	39-1/2-51
Static Capacity (lbs tonne)	100000/ 45	80000/ 36
Lifting Capacity (lbs/ tonne)	50000/22.7	40000/18
Beam Size	6" width x 24" length	6" width x 24" length
Net Weight (lbs/kg)	195/88.5	180/82



TJ60A

Model	TJ70	TJ70A
Service Range (in.)	44-51	44-51
Static Capacity (lbs/tonne)	50000/22.7	50000/22.7
Lifting Capacity (lbs/tonne)	none	none
Cap Size	5"x 5" square	5"x 5" square
Net Weight (lbs/kg)	45/20.5	45/20.5



TJ70

TJ70A

Industrial Steel Rolling Ladders RL series

- Capacity 350lbs/160 kg.
- Perfect for use in warehouse, stockroom and maintenance areas.
- Built to endure heavy everyday use.
- Increase productivity with speedy relocation.
- Two castors and two wheels for ease of movement on ladders with 4 steps and more.
- Non-slip steel steps.
- Conforms to EN131.



RL358



Model		RL351	RL352	RL353	RL354	RL355	RL356	RL357	RL358
Capacity	(kg)	160							
No.of the Step		1	2	3	4	5	6	7	8
Hight to Top Step	(mm)	250	500	750	1000	1250	1500	1750	2000
Castor/Wheel	DxW(mm)	PU Ø100X30							
Overall Size	(mm)	330x660x720	610x660x1140	800x660x1370	1180x900x1800	1460x900x2060	1600x900x2320	1860x900x2600	2080x900x2820
Net Weight	(mm)	7.5	14	19.5	50	60	66	75	

Industrial Steel Rolling Ladders RLC series

- Capacity 350lbs/160 kg.
- Perfect for use in warehouse, stockroom and maintenance areas.
- Built to endure heavy everyday use.
- Increase productivity with speedy relocation.
- Two castors and two wheels for ease of movement on ladders with 4 steps and more.
- Non-slip steel steps.
- Conforms to EN131.



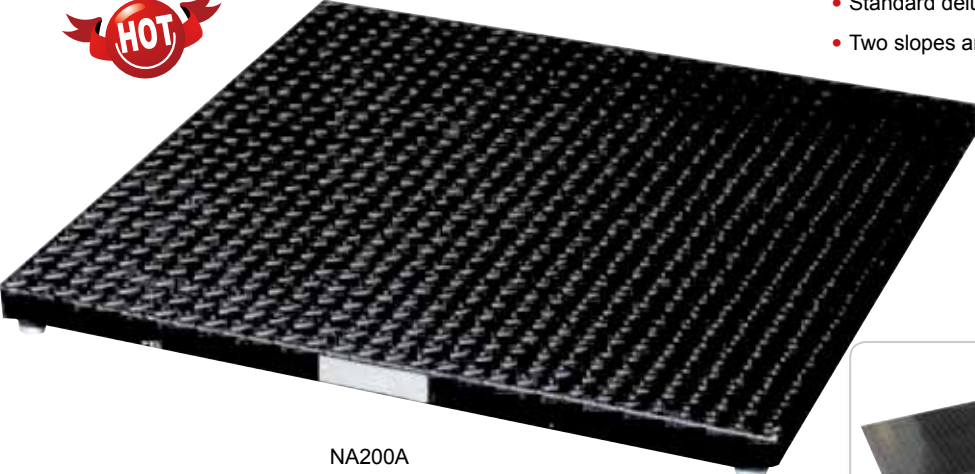
RLC358

Model		RLC354	RLC355	RLC356	RLC357	RLC358
Capacity	(kg)	160				
No.of the Step		4	5	6	7	8
Hight to Top Step	(mm)	1020	1275	1530	1785	2040
Castor/Wheel	DxW(mm)	PU Ø100X30				
Overall Size	(mm)	1220X900X2110	1450X900X2370	1670X900X2620	1890X900X2880	2100X900X3130
Net Weight	(mm)	65	75	85	95	105
Gross Weight	(kg)	75	89	104	118	133

Low Profile Floor Scale-NA series



stainless Indicator
It can display in lbs or kg.



NA200A

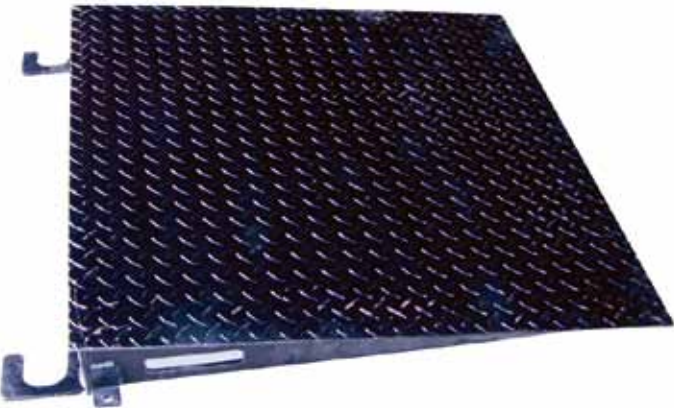


With optional slopes

Model		NA1000	NA2000A	NA2000B	NA5000A	NA5000B
Measuring Range	(lbs)	2000	5000	5000	10000	10000
	(kg)	1000	2000	2000	5000	5000
Indexing Accuracy	(lbs)	0.5	1	1	2	2
	(kg)	0.2	0.5	0.5	1	1
Sensor Capacity	(kg)	1000	2000	2000	5000	5000
Sensor NO.		4	4	4	4	4
Platform Size	(inch)	36X36	48X48	60X60	48X48	60X60
	(mm)	915X915	1220X1220	1524X1524	1220X1220	1524X1524
Height	(inch)	3	3	3	3	3
	(mm)	70	70	70	70	70
Net Weight	(lbs)	165	328	507	352	687
	(kg)	75	145	230	160	312
Equipment Temperature		-10°C~+40°C relative temperature<95%				
Sensor Temperature		-20°C~+60°C				
Voltage		110V~240V AC(-10%,+10%) 50 Hz				
Accuracy Class		3				

Slopes

Model	Width		Length		Angle	Net Weight	
	(inch)	(mm)	(inch)	(mm)		(lbs)	(kg)
LE36	36	915	36	915	4.45°	106	46
LE48	48	1220	36	915	4.45°	139	63
LE60	60	1524	36	915	4.45°	170	77



- Rugged steel diamond plate surface with heavy duty welded channel support.
- Overload protection to 150% of capacity ,adjustable leveling feet,can be pit mounted or free standing.
- Four load cells.
- Durable powder coat finishing, 6 digit 7 segment display, bi-directional RS232 port, and operator controls for Zero Tare, Unit, net/gross and print.
- Standard deluxe Stainless Steel indicator case.
- Two slopes are optional equipments.

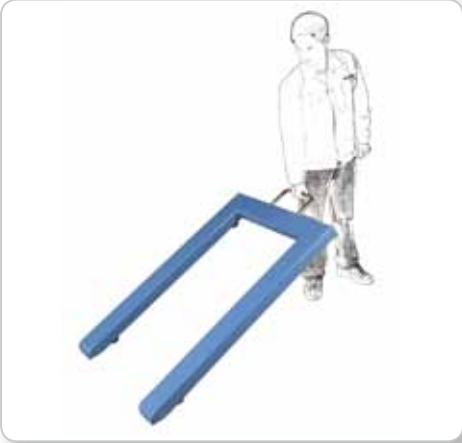
Mobile Floor Scale-NC series



- Design like NA series floor scale, but can move with four castors.
- Four alloy tool steel potted load cells..
- Deluxe Stainless Steel indicator as standard.
- Two slopes is fixed to the platform as standard.
- Two slope are supplied fort-pack for easy assembly.

Model		NC1000A	NC1000B	NC1000C	NC1500A	NC1500B	NC1500C
Measuring range	(kg)	1000	1000	1000	1500	1500	1500
Indexing accuracy	(kg)	0.5	0.5	0.5	0.5	0.5	0.5
Sensor Capacity	(kg)	2000	2000	2000	2000	2000	2000
Sensor Number.		4	4	4	4	4	4
Platform Size (LxW)	(mm)	1000X1000	1000X1200	1500X1500	1000X1000	1000X1200	1500X1500
Overall size with Slopes (LxW)	(mm)	2000X1300	2000X1500	2500X1800	2000X1300	2000X1500	2500X1800
Height	(mm)	60	60	60	60	60	60
Net Weight	(kg)	180	200	280	180	200	280

- 'U' Shaped Top Platform
- 'U' Shaped table scale are special for handling pallets, no need for a pit or load ramps
- Suitable for weighing in warehouse, storehouse.
- Light net weight, easy to move for one person,with two wheels.
- Four load cells.
- Deluxe stainless steel indicator as standard



'U' Pallet Scale-ND series



stainless Indicator
It can display in lbs or kg.

Model		ND500	ND1000	ND2000	ND3000	ND5000
Measuring range	(kg)	500	1000	2000	3000	5000
Indexing accuracy	(kg)	0.5	1	2	3	5
Resolution Step	(kg)	4	10	20	20	40
Sensor Number.		4				
Height	(mm)	120				
Net Weight	(kg)	38	38	38	38	45

- A compact measuring device for weighing loads during lifting.
- Appropriate tackle can be attached to assist in the lifting and weighing.
- The crane weighters have a liquid crystal display(LCD),which can tare as well as show either the gross or net loads.
- It also indicates the load protection at 110% of the gross weight and the status of the battery.
- Conforms to CE safety standard.



Model	Measuring Range(tonne)	Indexing Accuracy(kg)	Resolution Step(kg)	Net Weight (kg)
XZ05	0-0.5	0.2	4	10
XZ10	0-1	0.5	10	25
XZ20	0-2	1	20	25
XZ30	0-3	1	20	25
XZ50	0-5	2	40	30
XZ100	0-10	5	100	60
XZ150	0-15	5	100	60

Digital Load Indicators-ID series



- The Nu-Lift load indicator is a mechanical measuring instrument with electronic display.
- Because of its flexibility the Nu-Lift load indicator has universal applications.
- Whether used as a conventional crane scale or to measure forces,it is the economical choice for various applications.It can be used in conjunction with shackles and hooks
- The load indicator is provided with liquid crystal display (LCD) which can tare as well as show either the gross or the net load.
- It also indicates the overload protection at 110% of the gross weight and the status of the battery.
- Conforms to CE safety standard.

Model		ID250	ID500	ID1000	ID2000	ID3200	ID6400
Max capacity	lbs(kg)	550(250)	1100(500)	2200(1000)	4400(2000)	7000(3200)	1400(6400)
Precision	lbs(kg)	4(2)	8(4)	16(8)	30(15)	50(25)	100(50)
Indexing accuracy	lbs(kg)	1(0.5)	2(0.9)	2(0.9)	10(4.5)	10(4.5)	20(9)
Test capacity	lbs(kg)	1100(0.5)	2200(1)	4400(2)	8800(4)	14000(6.4)	28000(12.8)
Net weight(steel)	lbs(kg)	3.08(1.4)	3.08(1.4)	30.8(1.4)	3.64(1.68)	4.2(1.96)	6.44(2.8)
Net weight(Aluminum)	lbs(kg)	1.1(0.5)	1.1(0.5)	1.1(0.5)	1.3(0.6)	1.5(0.7)	2.3(1)

Nu-Lift load indicator feature include,high accuracy,lightweight design,easy to read display,easy to use, excellent quality, sturdy design, retains the maximum value to memory and is rechargeable with integrated storage battery.

Rolling Step Stool-steel type

- Rolling Step Stool is safe for indoor use.
- Spring loaded casters for rolling and retract.
- Rubber ring around the base.
- Non-slip rubber surface on each step.
- Powder coating on steel construction.
- Easy assemble without need for tools.



Model		RS2025
Capacity	kg (lbs)	250 (500)
Top Dia.	(mm) inch.	290 (11.4)
Bottom Dia.	(mm) inch.	454 (17.9)
Height to Top Step	(mm) inch.	435 (17.1)
Color Finish		Yellow / Blue / Pink
Construction		Steel
Quantity Steps		2
G.W./N.W.	kg (lbs)	6/5 (13/11)

Pallet Jack Stop

- This durable Pallet Jack Stop prevents any movement on the floor of a truck or trailer. It can easily be picked up and placed in convenient spots. Drivers will never again have to tie down a pallet jack, use a load bar to hold it or flip it on its side. Just pull it into the Pallet Jack Stop and it's parked in less than two seconds.
- It is designed to eliminate freight and trailer door damage due to runaway pallet trucks.
- It protects valuable freight and equipment from damage caused when a pallet truck drifts.
- Ideal for freight companies, trucking companies, and other material handling customers.



Model		PTS99
Overall Size	LxWxH (mm)	650x360x70
Gross Weight	(kg)	4
Net Weight	(kg)	3.5

